

AIR POLLUTION SOURCES

Air pollution is caused by a build-up of particulate matter and gases in the air, that come from a range of natural and human-made sources.

Natural sources of air pollution:

Weather, desert dust storms, forest fires, volcanoes, pollen and soil.

Human-made sources:

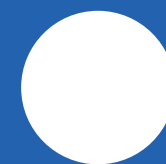
Transport (cars, planes, boats), fossil fuels, agricultural fertilizers, paints and varnishes, aerosols such as hair spray, landfills, industrial processes, wood burning stoves, urbanization, burning candles, furniture and cleaning products.



AIR POLLUTION SIZE

Particulate matter pollution is made up of particles floating in the air. These particles are often equivalent to, or smaller than, the diameter of a strand of human hair.

•
0.1 μ m =
vehicle exhaust
emissions

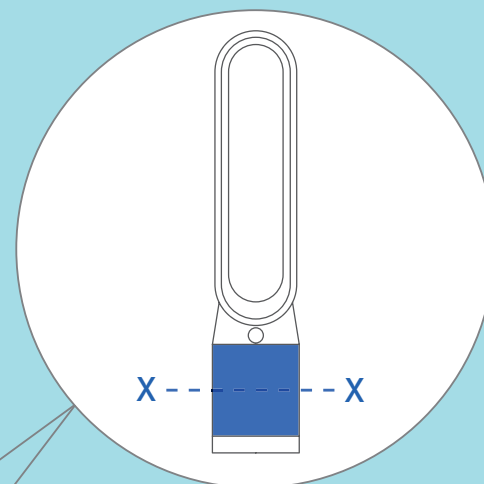


10 μ m = pollen

100 μ m =
a human hair

AIR POLLUTION FILTRATION

Dyson Pure Cool™ purifying fans contain two types of filter to capture both particulate matter and VOCs: the HEPA filter and activated carbon filter.



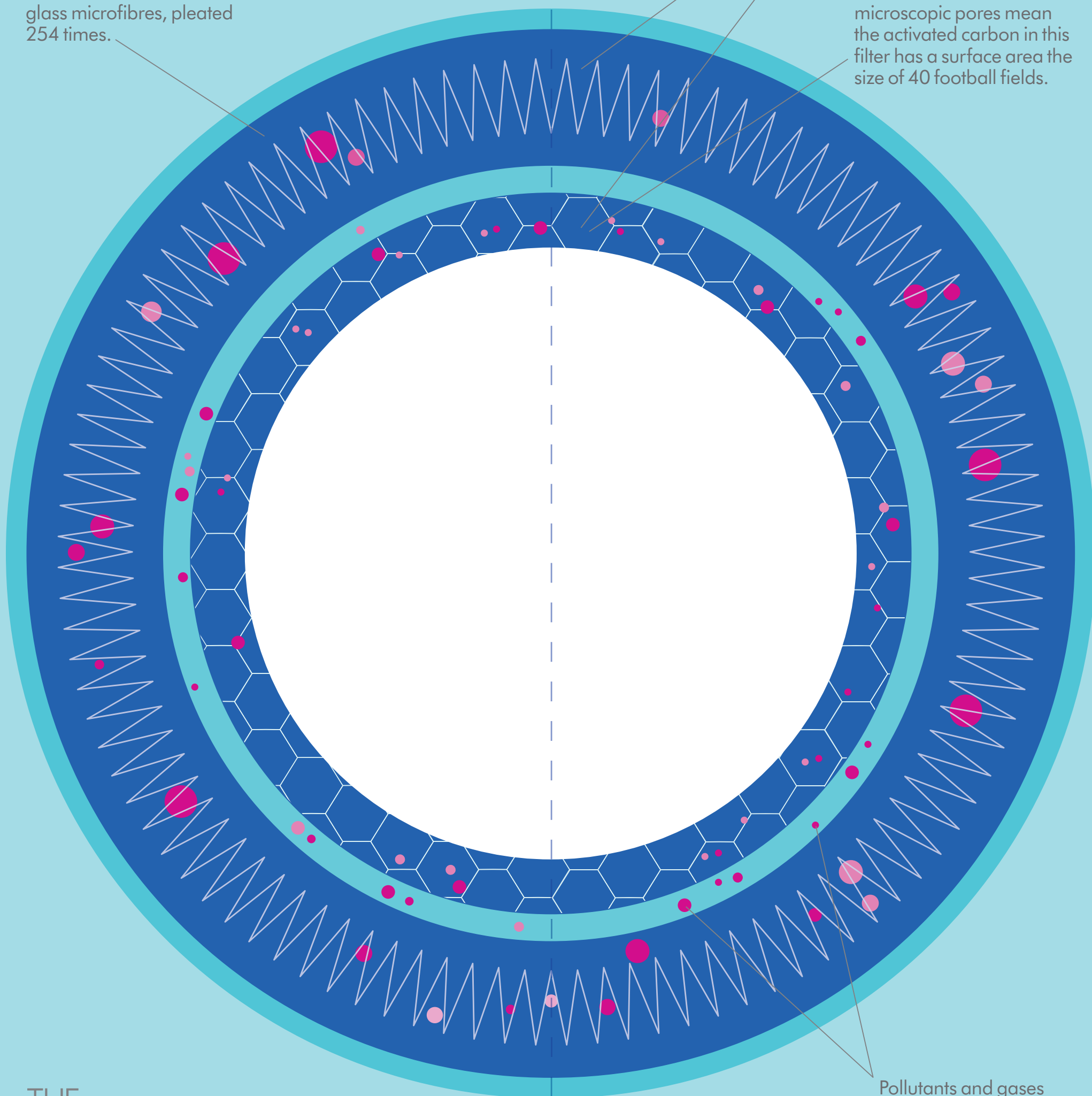
Cross Section
Dyson Pure Cool™ Purifying Fan

HEPA filter

Contains 9m² of borosilicate glass microfibrils, pleated 254 times.

Activated carbon filter

An internal network of microscopic pores mean the activated carbon in this filter has a surface area the size of 40 football fields.

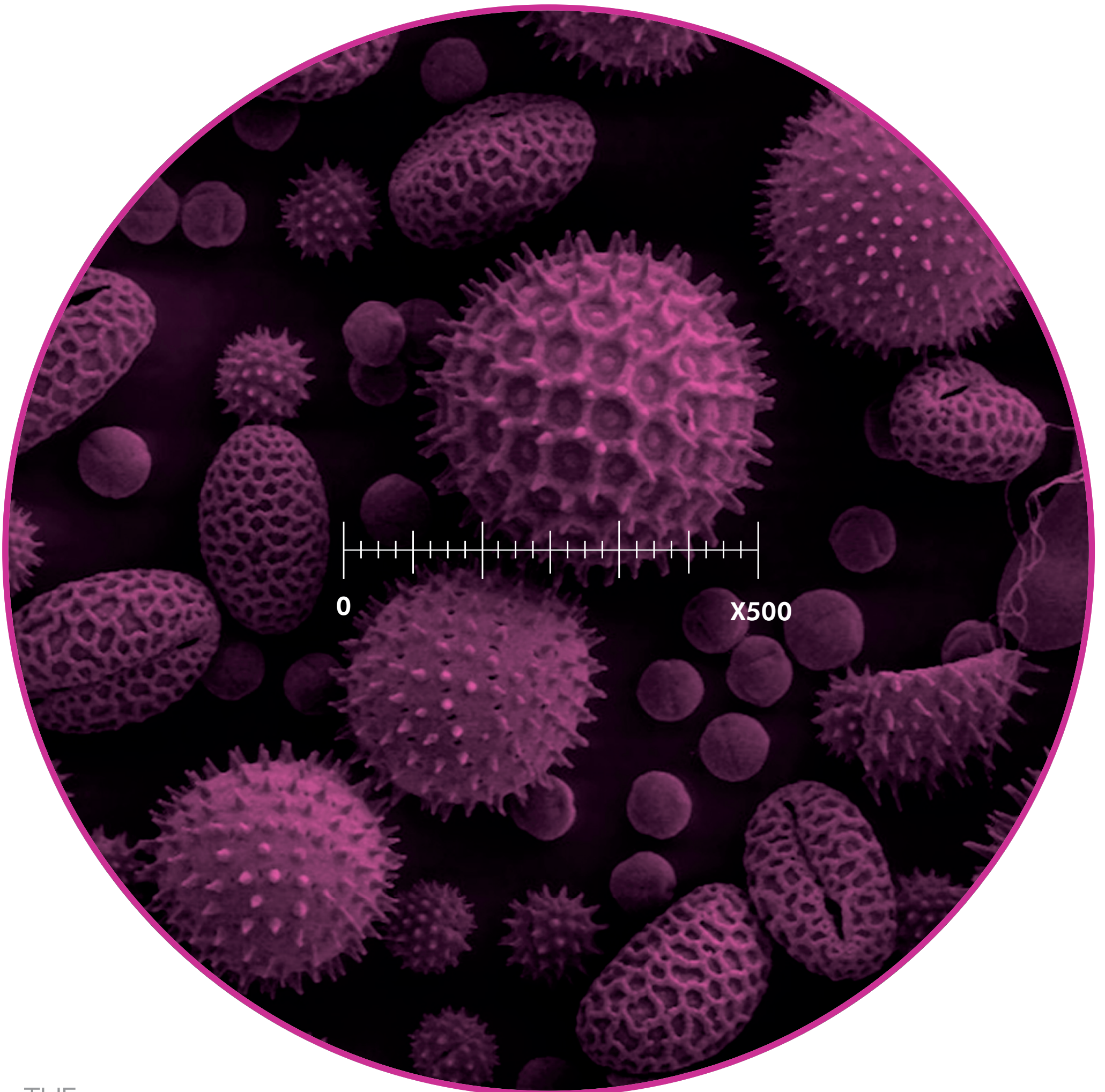


Pollutants and gases

AIR POLLUTION MAGNIFIED X500

Many pollutants are very small and can't be seen by the naked eye. Microscopes allow us to see what they look like close up.

This image shows a mixture of pollen from a variety of plants such as lilies and sunflowers. It has been magnified 500 times through an electron microscope. What do you notice about the size and shape of the particles?



PROBLEM SOLVING THE DESIGN PROCESS

Engineers are problem solvers. They research and develop ideas for new products and think about how to improve existing technologies. This is all part of an iterative journey called the design process.

